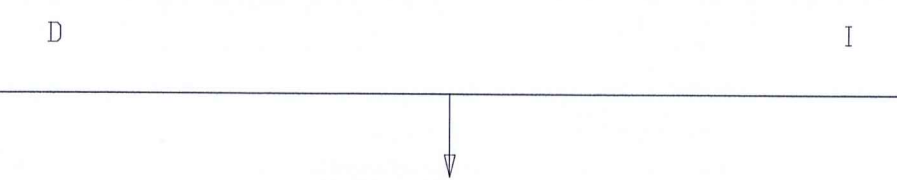
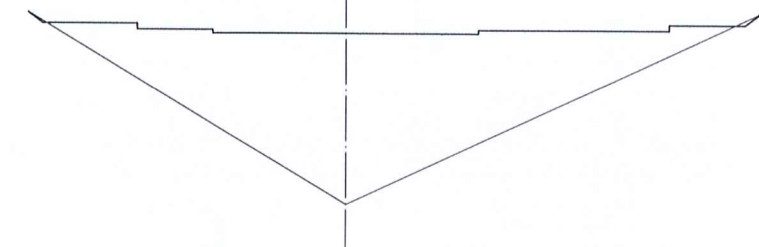


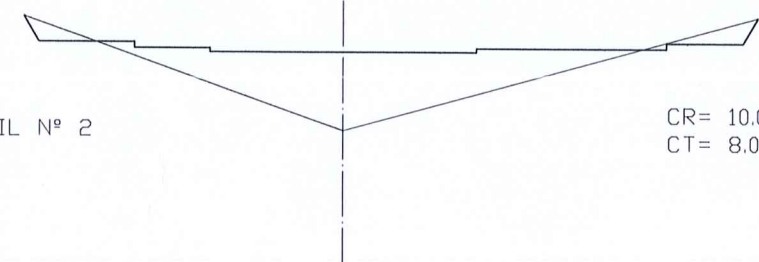
PERFILES TRANSVERSALES VIAL -1-



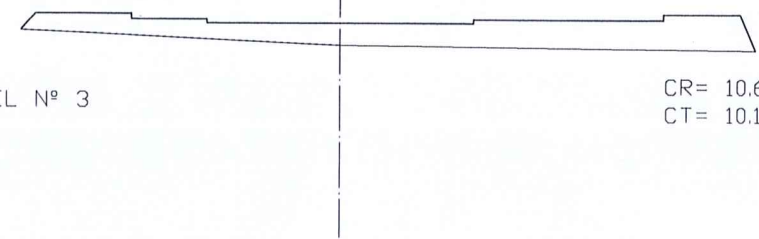
PERFIL Nº 1 CR= 9.451
CT= 4.932



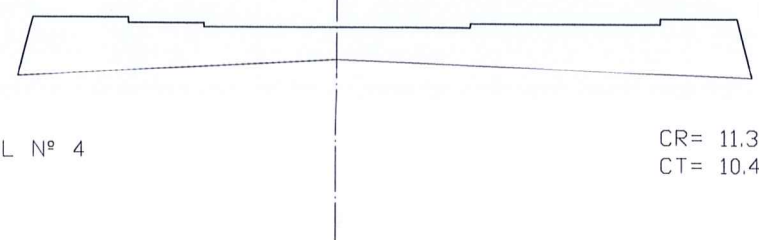
PERFIL Nº 2 CR= 10.075
CT= 8.00



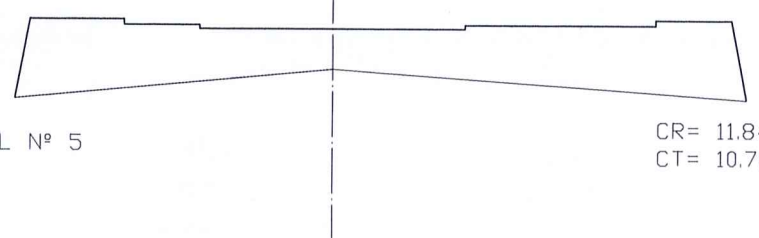
PERFIL Nº 3 CR= 10.699
CT= 10.116



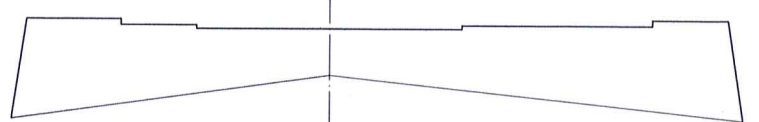
PERFIL Nº 4 CR= 11.303
CT= 10.448



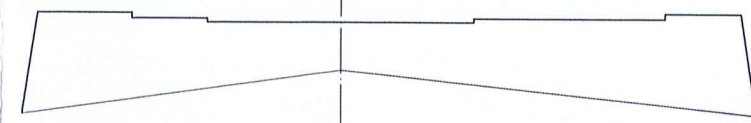
PERFIL Nº 5 CR= 11.848
CT= 10.780



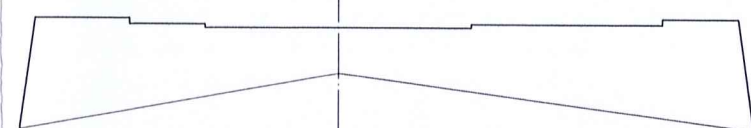
PERFIL Nº 6 CR= 12.394
CT= 11.169



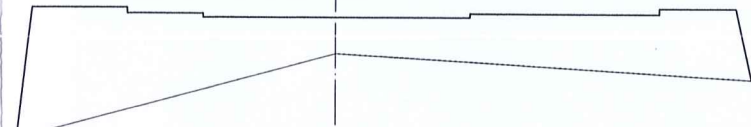
PERFIL Nº 7 CR= 12.939
CT= 11.669



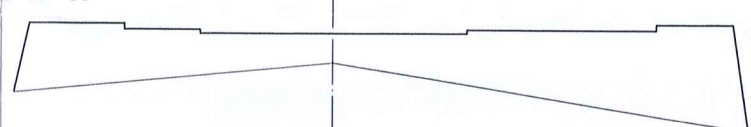
PERFIL Nº 8 CR= 13.484
CT= 12.273



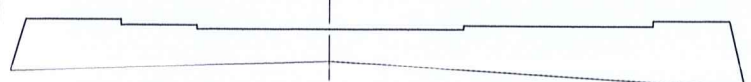
PERFIL Nº 9 CR= 14.030
CT= 13.073



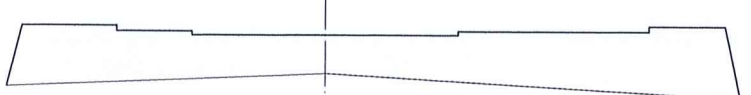
PERFIL Nº 10 CR= 14.575
CT= 13.793



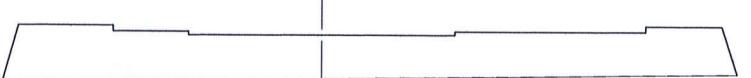
PERFIL Nº 11 CR= 15.120
CT= 14.270



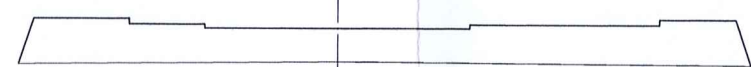
PERFIL Nº 12 CR= 15.665
CT= 14.648



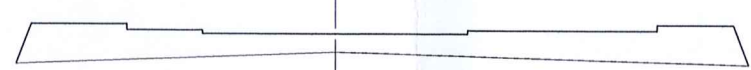
PERFIL Nº 13 CR= 16.211
CT= 15.059



PERFIL Nº 14 CR= 16.756
CT= 15.873



PERFIL Nº 15 CR= 17.301
CT= 16.823



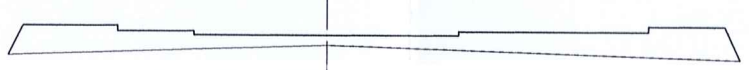
PERFIL Nº 16 CR= 17.847
CT= 17.552



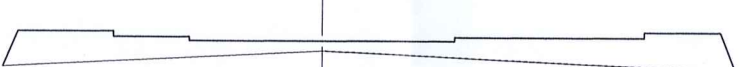
PERFIL Nº 17 CR= 18.392
CT= 18.170



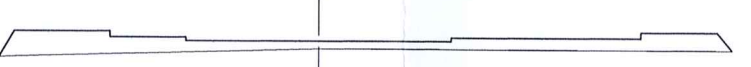
PERFIL Nº 18 CR= 18.937
CT= 18.677



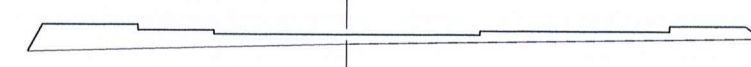
PERFIL Nº 19 CR= 19.483
CT= 19.221



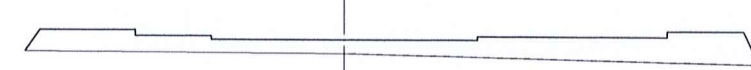
PERFIL Nº 20 CR= 20.028
CT= 19.828



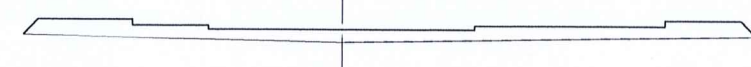
PERFIL Nº 21 CR= 20.573
CT= 20.317



PERFIL Nº 22 CR= 21.119
CT= 20.759



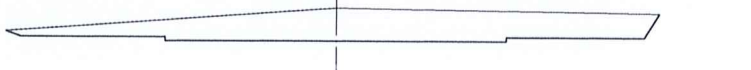
PERFIL Nº 23 CR= 21.664
CT= 21.322



PERFIL Nº 24 CR= 22.209
CT= 22.064



PERFIL Nº 25 CR= 22.755
CT= 23.625



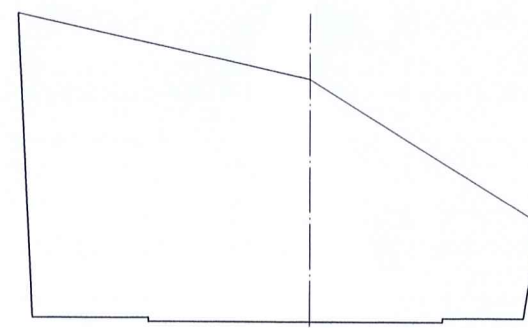
PERFIL Nº 26 CR= 23.257
CT= 25.309



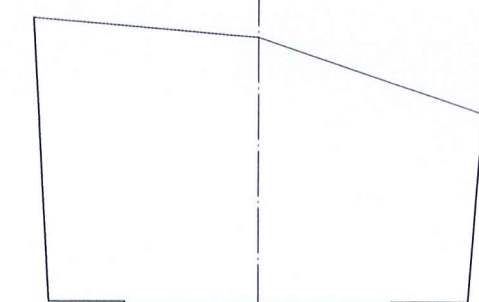
PERFIL Nº 27 CR= 23.809
CT= 26.660



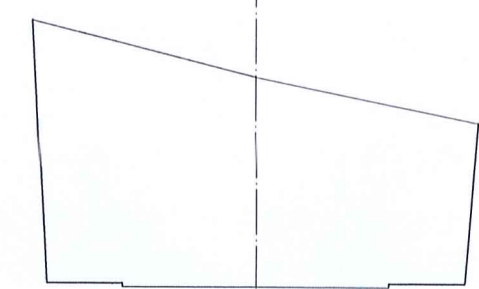
PERFIL Nº 28 CR= 24.361
CT= 30.763



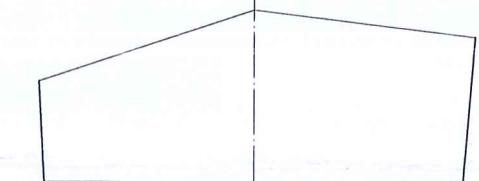
PERFIL Nº 29 CR= 24.914
CT= 32.000



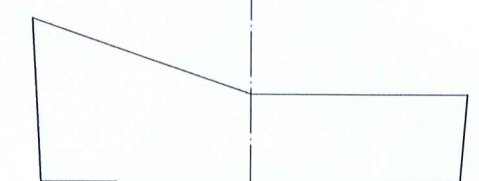
PERFIL Nº 30 CR= 25.466
CT= 31.000



PERFIL Nº 31 CR= 26.018
CT= 30.695



PERFIL Nº 32 CR= 26.570
CT= 29.000



R.C. 27294/02

Nº

Delegación: ANDALUCÍA
Col.: FRANCISCO MORENO JIMÉNEZ
PRYU URB. UNIDAD DE EJECUCIÓN C-17 DE MIJAS (MALAGA)
Vis. 3951/02
8 de Noviembre de 2002
Prepto: 207.400,00
Nº Col: 1594
PLANOS

PROYECTO DE URBANIZACION DE LA UNIDAD
DE EJECUCION C-17 DE MIJAS (MALAGA)

PETICIONARIO: APEX 2000 S.A.U.

PLANO DE:	REF	021102
PERFILES TRANSVERSALES VIAL B	FECHA	NOV 2002
Francisco Moreno Jiménez	ESCALA:	1/200
Ingeniero Industrial	SUST.	
	PLANO Nº	10



C/ Margarita, 65
local 2, bloque 3
29549 Mijas-Costa
MALAGA
Tl: 952 58 23 23
g7ingenieria@g7ingenieria.com